

# GENADYNE



# XLR8

**Next Generation of Negative Pressure Wound Therapy**

# XLR8

- Only 585 grams
- Whisper Quiet Operation
- 3 hours to fully charge
- 12+ hour battery life
- Supports Multiple Languages
- 5 Advance Alarms
  - Leakage
  - Blockage
  - Canister Full
  - Low Battery
  - Critical battery



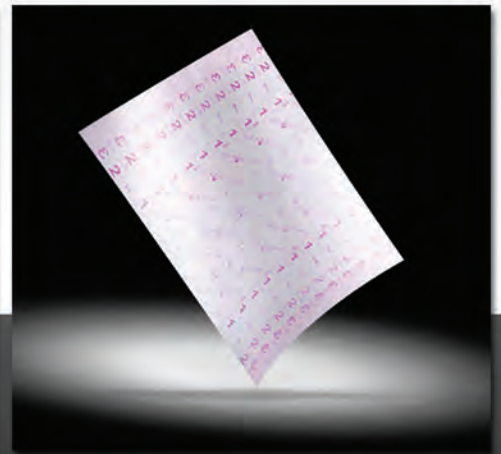
**Multi Canister System**  
200cc, 400cc, 600cc

One XLR8, many solutions. The canister system allows the clinician to choose the appropriate canister for the amount of wound drainage.



**Silicone PortPad**

Revolutionary silicone PortPad provides the softest patient interface available. Allowing for increased patient comfort, safety and compliance.



**XLR8 Drape**

Improved XLR8 drape has higher visibility, allowing for easier alignment over the foam dressing. Pre marked cutting guides assist in obtaining the right sized drape the first time.



# MORE THAN JUST A DIFFERENT COLOR

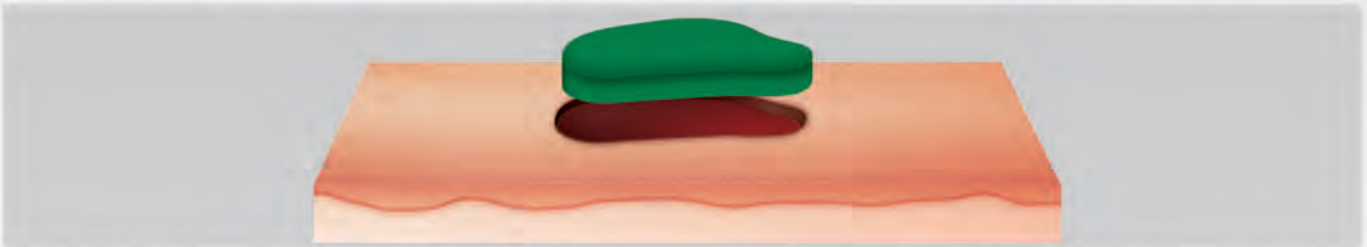
**The visual impact of the XLR8 GreenFoam is undeniable.** Green was chosen to allow clinicians to better differentiate viable and non-viable tissue in the wound bed. The color contrast increases differentiation with the wound bed.

## XLR8 GreenFoam

Is a fully reticulated polyurethane foam made with polyether resin to allow better hydrolytic stability. The design increases performance under pressure and in moist environments. The foam's non-adherent property allows for easier removal during dressing changes, therefore reducing pain and discomfort.

The foam creates direct contact with the wound bed, allowing for even distribution of pressure. This assists in reducing edema and promotes tissue perfusion and granulation.

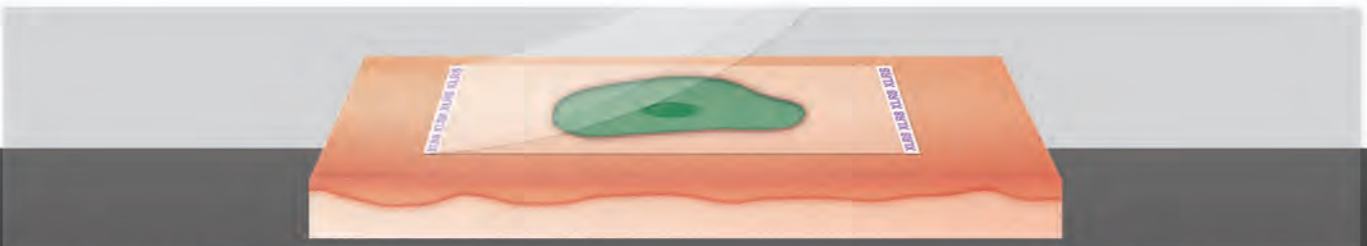
The Duo Decahedron cell structure gives a three-dimensional skeletal strand to the cells, which increases the removal of exudate and infectious materials. This cell structure also increases tensile strength, to prevent fraying.



Step 1: Protect the periwound skin with the XLR8 Drape, ensuring the film is as close to the edge of the wound as possible and not covering any open area of the wound.

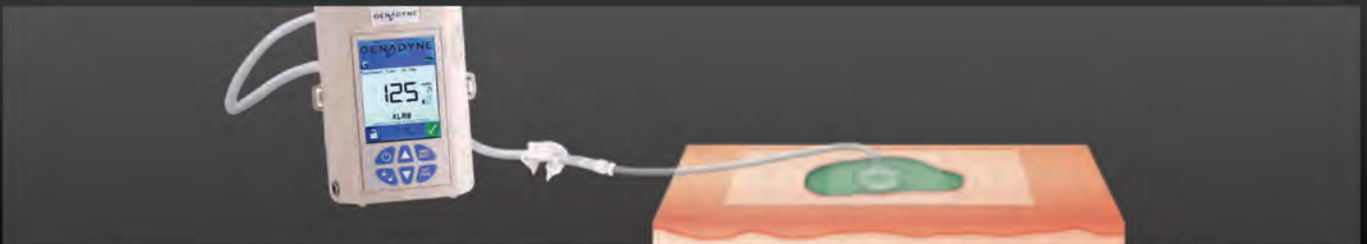
Step 2: Cut the GreenFoam the size and shape of the wound. Avoid cutting the GreenFoam over the wound.

Step 3: Place the GreenFoam into the wound cavity ensuring it comes into contact with all the wound margins and sits above the level of the wound. Ensure the GreenFoam is not packed tightly into the wound.



Step 4: Cover the GreenFoam with the XLR8 Drape. Avoid compressing the GreenFoam with XLR8 Drape, or stretching the XLR8 Drape.

Step 5: Cut a hole in the covering film roughly the size of a quarter.



Step 6: Remove the paper back off of the PortPad dressing and apply it over the hole that was cut in the XLR8 Drape. Attach the PortPad dressing luer lock to the canister luer lock end. Turn the unit on, ensure there are not any leaks.

# Advanced Intermittent Variable Negative Pressure Wound Therapy

The XLR8's advanced variable pressure capabilities allow different negative pressures to be used without the downsides of Intermittent Therapy.

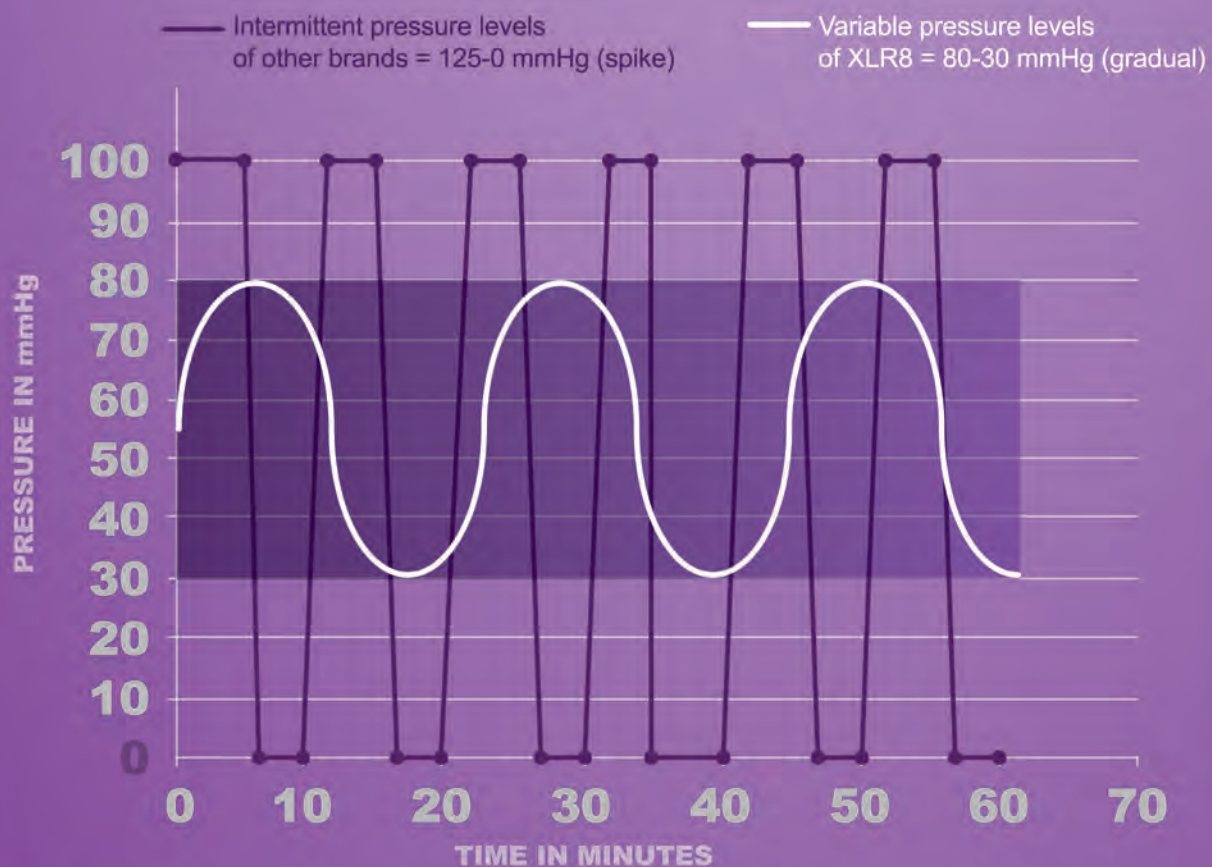
By maintaining negative pressure throughout the cycle, it avoids losing an airtight seal and displacement of the dressing, which would allow exudate to pool in the wound bed.

This gradual "wave" is gentler to the patient, increasing blood flow to the peri-wound, and preventing ischemia. The changes in pressure are imperceptible to the patient, increasing patient comfort and compliance.

Without the sudden peaks in pressure from Intermittent Therapy, in-growth of the granulation tissue to the foam dressing is virtually eliminated which makes dressing changes less stressful and less painful to the patient.

## ADVANCED INTERMITTENT VARIABLE NEGATIVE PRESSURE WOUND THERAPY

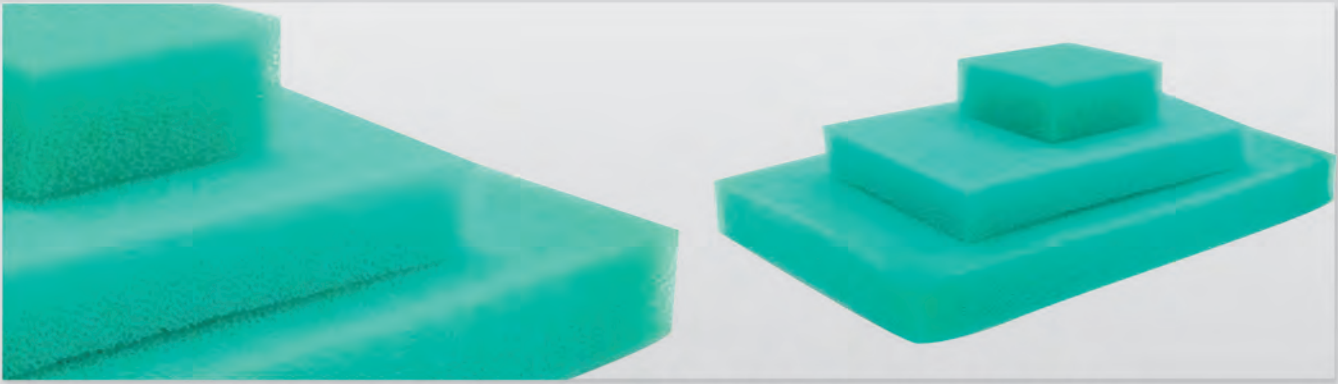
### INTERMITTENT THERAPY



- Completely customizable High and Low pressure settings
- Always maintains negative pressure at wound site

- Discomfort due to pressure spikes is eliminated
- Based on clinical needs pressure can be set above or below capillary pressure of 32mmHg





XLR8 GreenFoam Thin Dressing: Small 6x6x2.5cm Medium 15x10x2cm Large 25x15x2.5cm



XLR8 GreenFoam Thick Dressing: Small 10x7.5x3.3cm Medium 18x12.5x3.3cm Large 26x15x3.3cm



XLR8 Canisters 200cc, 400cc, 600cc



Y Connector



Silicone PortPad



XLR8 Drape



## Genadyne Biotechnologies

16 Midland Ave  
Hicksville | NY 11801  
Toll Free +1 800 208 2025  
Tel +1 516 470 9560  
Fax +1 877 487 7878

[info@genadyne.com](mailto:info@genadyne.com) • [www.genadyne.com](http://www.genadyne.com)

## Genadyne Canada

31 Tamara Pl, Unit #1  
Brantford | ON N3P 1M8  
Toll Free + 1 888 787 2811  
Tel +1 519 770 0020  
Fax +1 877 487 7878

[info@genadyne.ca](mailto:info@genadyne.ca) • [www.genadyne.ca](http://www.genadyne.ca)